



SAFE HOUSE
PROJECT

**Repairing & Protecting
the Survivor - Ally Relationship
within the Anti-Trafficking Field**

WWW.SAFEHOUSEPROJECT.ORG



ALIA AZARIAH (DEWEESE)

Director of Aftercare

Lived Experience Expert

Alia@SafeHouseProject.org



KATHLEEN ARNOLD

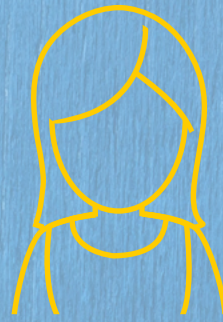
Senior Director of Programs

Kathleen@SafeHouseProject.org

EDUCATE

AMPLIFY

ELEVATE



Identifying Victims

Increasing victim identification through education and training opportunities for healthcare workers, law enforcement, educators, employees, and community members. To date, we have trained over 200k individuals.



Supporting Survivors

Providing emergency transportation, basic necessities, and safe house placement to survivors exiting a trafficking situation. Hiring survivors to live into their career goals through a trauma-informed work environment. In 2021, we supported 207 survivors in different areas of their journey.



Restoring Lives

Elevating the national standard of aftercare through Safe House Project Certification. Investing in new or expanding safe house programs through mentorship and funding. Innovating to address the deepest needs and biggest gaps in survivor care. In addition to launching Safe House Certifications, our funding allowed for an additional 272 new beds to be added to the national landscape last year.



Overview

- Why LEEs Matter
- Survivor/Provider Timelines
- Types of Engagements
- Key Considerations
- Going Above & Beyond
- Handouts & Contracts
- Q & A

Training Objectives

1. Equip survivors with the tools and knowledge to establish and safeguard boundaries as they transition from receiving services to becoming Lived Experience Experts and Survivor Leaders.
2. Empower survivors to actively shape their organizations by advocating for ethical and equitable engagement policies for Lived Experience Experts.
3. Familiarize survivors with the purpose and content of essential documents, such as Lived Experience Expert/organization contracts, compensation tables, and proposed policies, to facilitate informed participation and decision-making.



SAFE HOUSE
PROJECT

Why You Matter

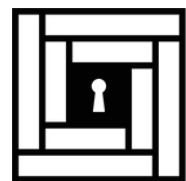
PERSPECTIVE

CREDIBILITY

EFFECTIVE

REACH & RELATE

BREAKDOWN BARRIERS



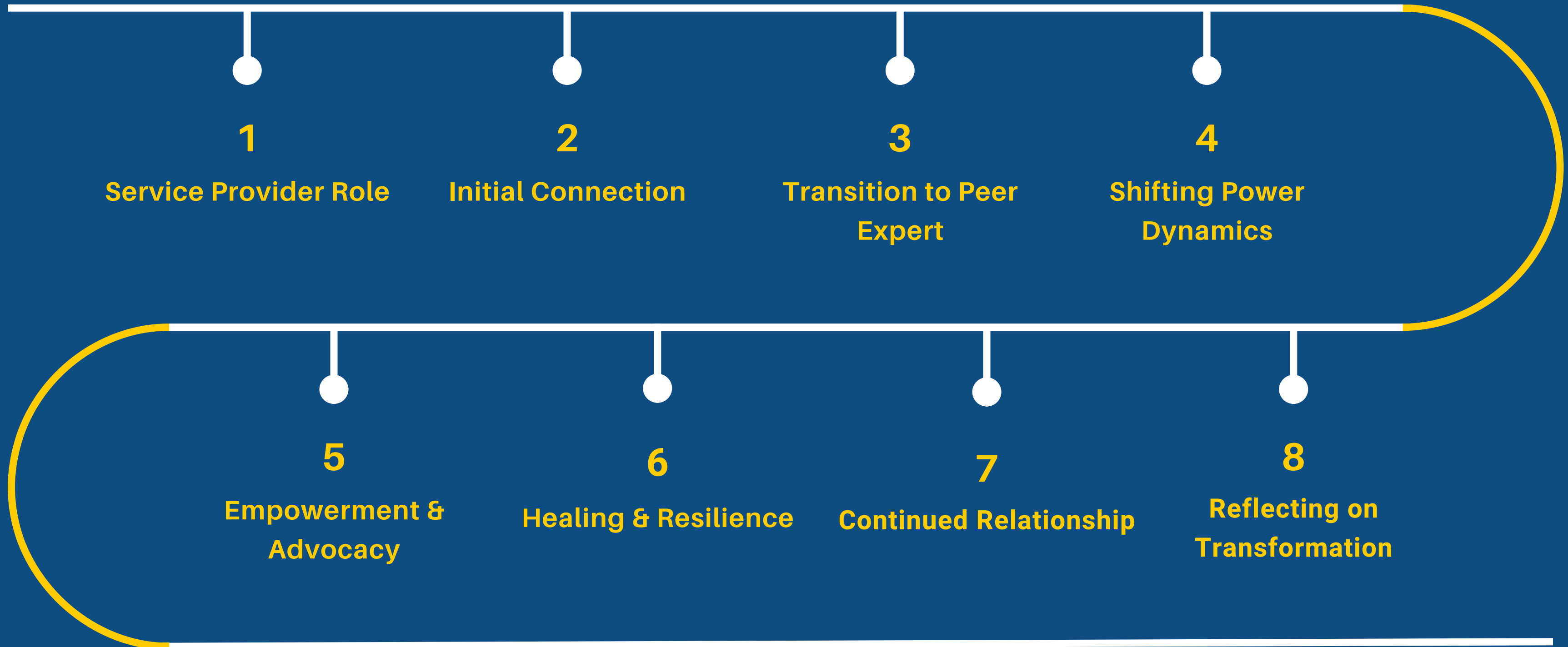
SAFE HOUSE
PROJECT



Survivor to LEE Timeline



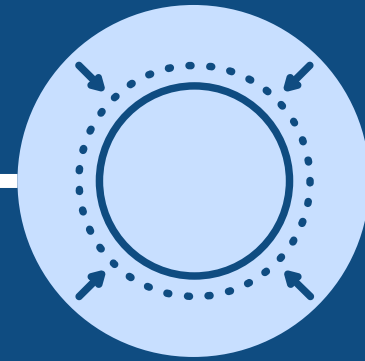
Provider Perspective Timeline



POTENTIAL AREAS OF TENSION



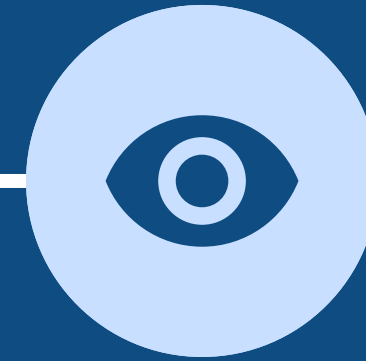
Emotional Attachment



Navigating Boundaries



Power Dynamics



Self Reflection & Impact



Managing Expectations



Loss of Control



Comparisons & Identity



Personal Impact



Ethical Considerations



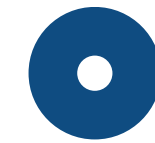
Role Transition



The Right Provider



PROTECTIVE FACTOR



RESPONSIBILITY



SET THE BAR



CONTINUUM



Types of Engagement

Fundraising

Industry Events

Boards

Focus Groups

Training

Research Study
Participation

Expert Witness

Media Appearances

Political Advocacy &
Policy

Books & Written
Materials

Faith-Based Events

Corporate Events

Webinars & Online
Events

Panel Discussions



01

Alignment of Values & Goals

02

Clear Expectations

03

Compensation

04

Travel Accomodations

05

Trauma-Informed

06

Safety & Privacy

07

Support System

Key Considerations - BEFORE -



SAFE HOUSE
PROJECT

Key Considerations - DURING -

01

Environment

02

Empowerment & Agency

03

Moderation & Trigger Warnings

04

Boundaries





Key Considerations - AFTER -

01

Debriefing & Support

02

Feedback & Reflection

03

Follow-Up Care

04

Maintain Relationships

05

Consent for Use of Content

06

Compensation & Reimbursement

Going Above & Beyond

Gifts

Itinerary

Personal information

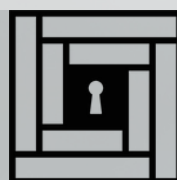
Snacks

Hair

Chaperone



HANDOUTS



SAFE HOUSE
PROJECT

Questions?



SAFE HOUSE
PROJECT



SAFE HOUSE

P R O J E C T

WWW.SAFEHOUSEPROJECT.ORG